

**MORECAMBE BAY  
PARTNERSHIP**

# Neolithic and Bronze Age Millom



# Timeline

## The Neolithic

6000-4300 years ago

- Early 6000-5500
- Late 5500-4300
- Introduction of farming
- People moved around less
- First use of pottery
- Tools are larger and more decorative
- Large monuments are built

## The Bronze Age

4300-2800 years ago

- Early 4300-3500
- Middle 3500-3000
- Late 3000-2800
- First use of metals
- Agriculture is widespread
- People live in permanent settlements
- Pottery gets fancier
- Monuments are expanded and smaller ones built

# Subsistence and settlement

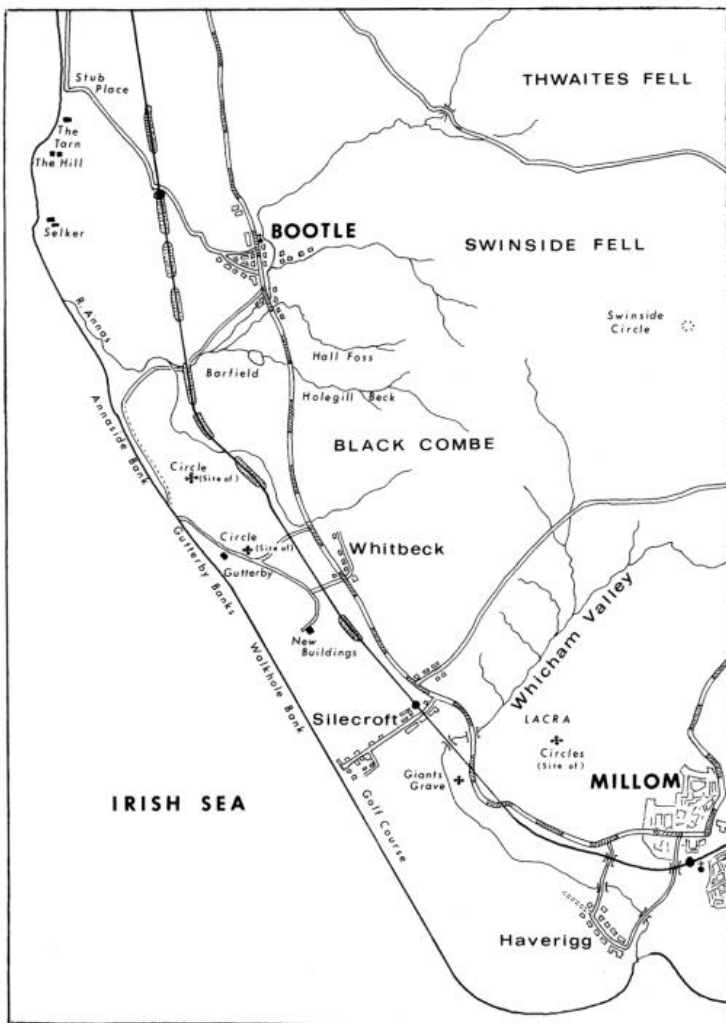


FIG. 1 - Sketch map of the area between Bootle and Millom, covered in the report.

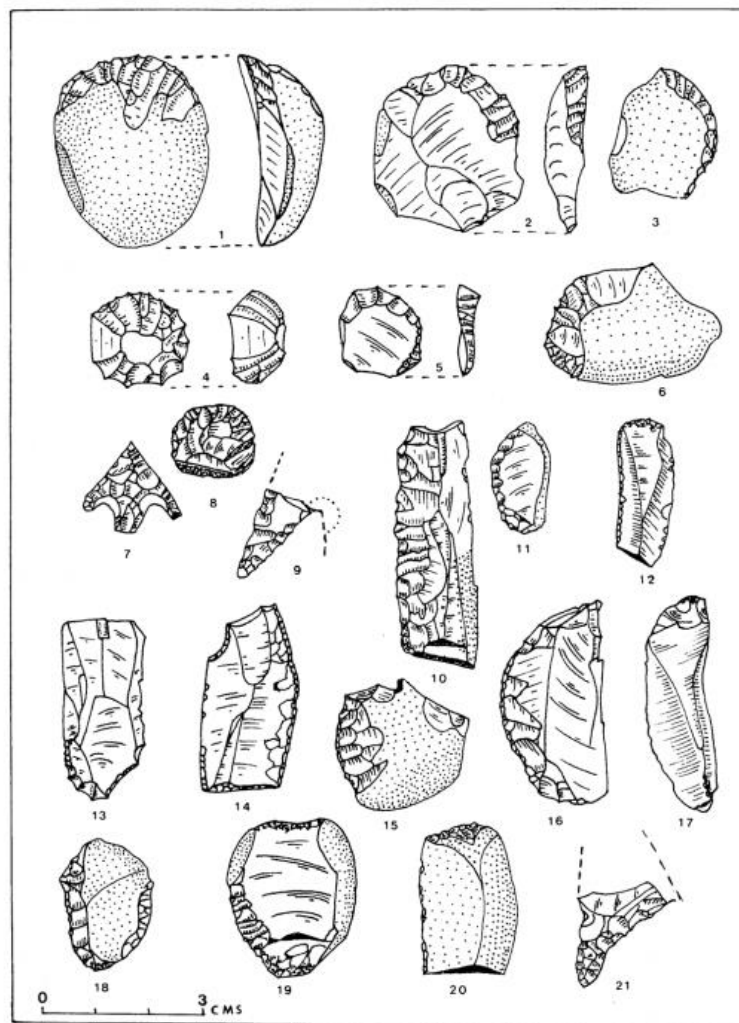


FIG. 2. - A selection of artefacts found on the coastal strip between Eskmeals and Haverigg.

# Production sites

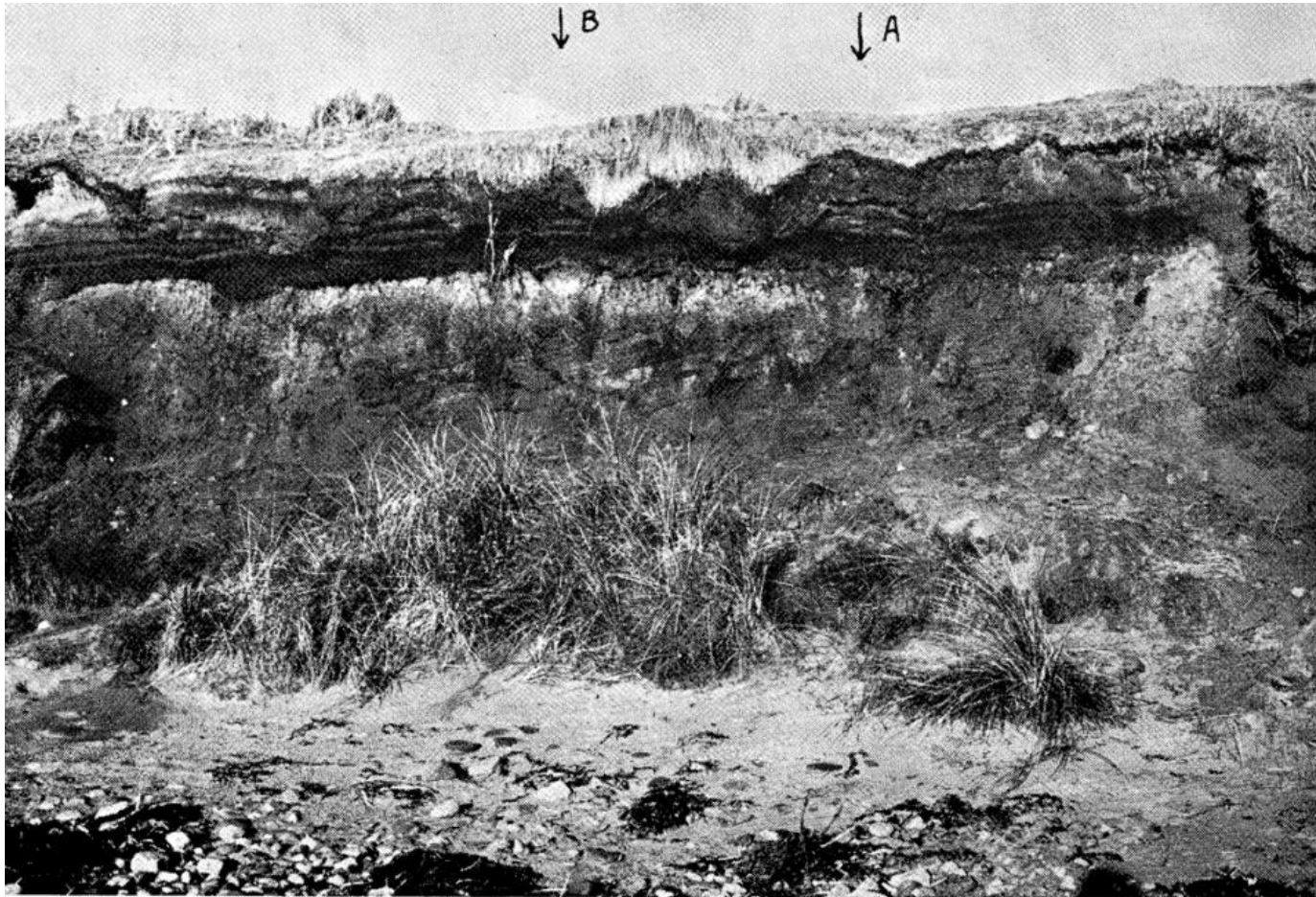
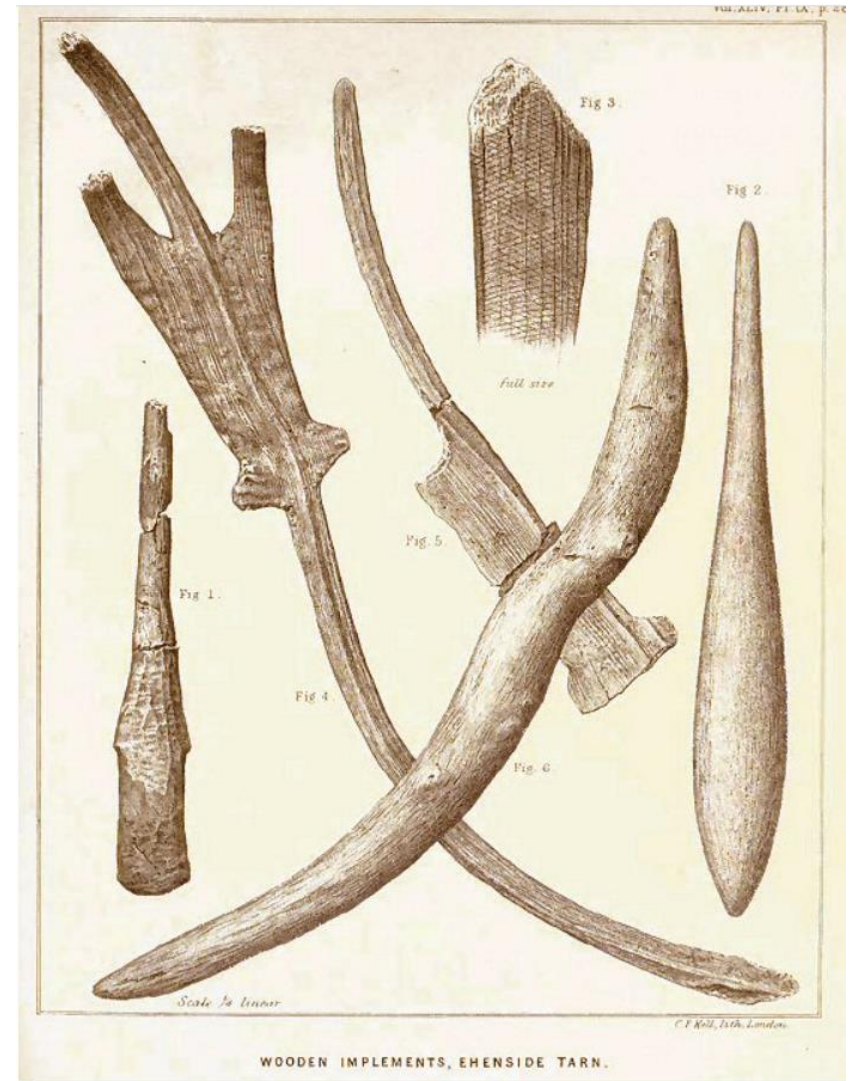


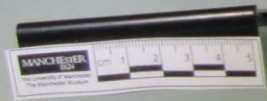
PLATE I.—The exposure of the organic band in the low cliff at Drigg.  
A and B mark the positions of the two pollen diagrams.

# If trees could talk



# Waterlogged finds









# Marking your territory







A5093

Limestone Hall  
Signal Box

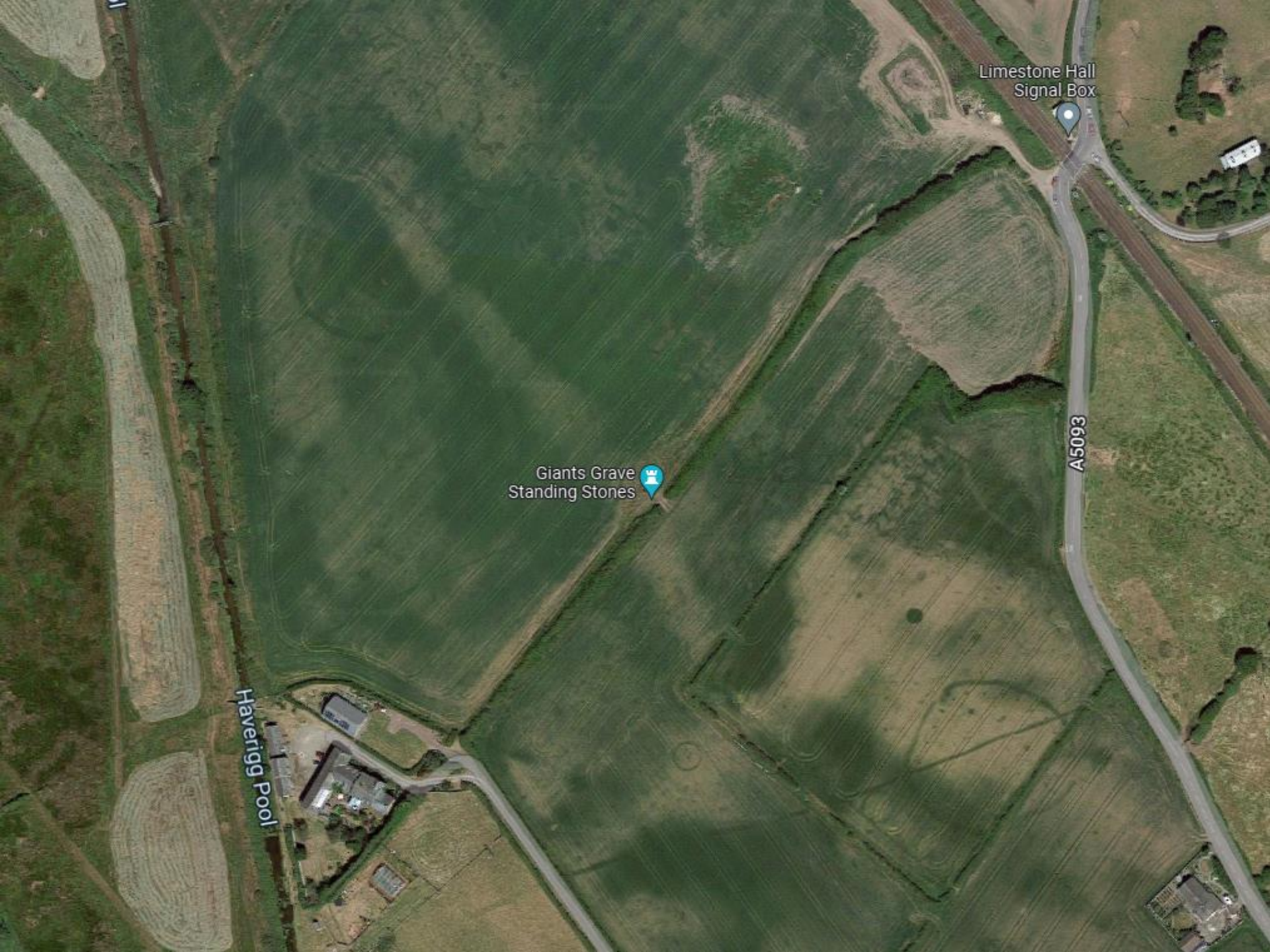


A5093

Giants Grave  
Standing Stones



Haverigg Pool



# Community and memory



# Bring out your dead



# Bring up the bodies?

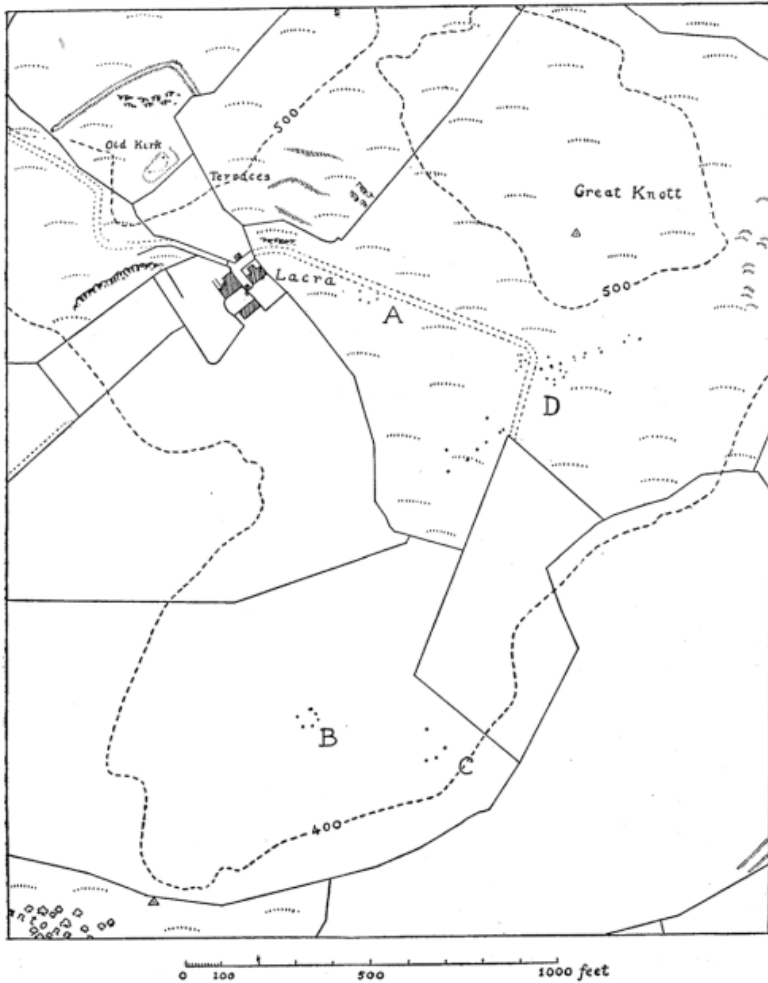


FIG. 1.—Based upon the Ordnance Survey Map with the sanction of the Controller of H.M. Stationery Office.

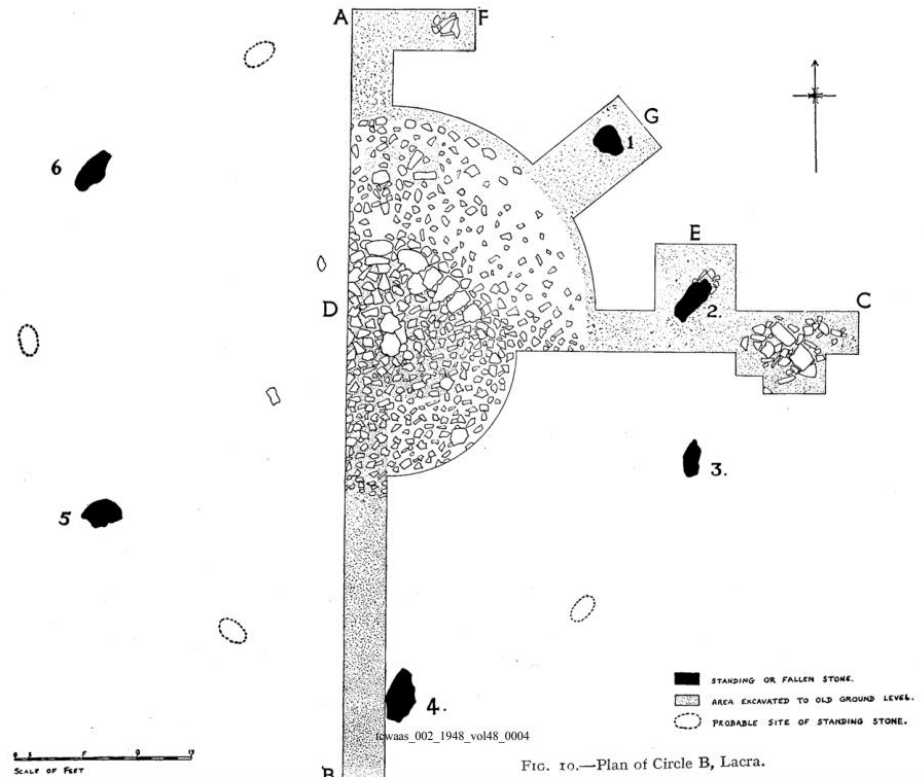


FIG. 10.—Plan of Circle B, Lacia.







# **The only charity solely dedicated to connecting people with the nature, heritage & culture of Morecambe Bay**

[www.morecambebay.org.uk](http://www.morecambebay.org.uk)



mb\_partnership



@\_Mbay



MorecambeBayPartnership