

# DUANE FARREN'S PHOTO ARCHIVE: SCENES

by Jan Bridget



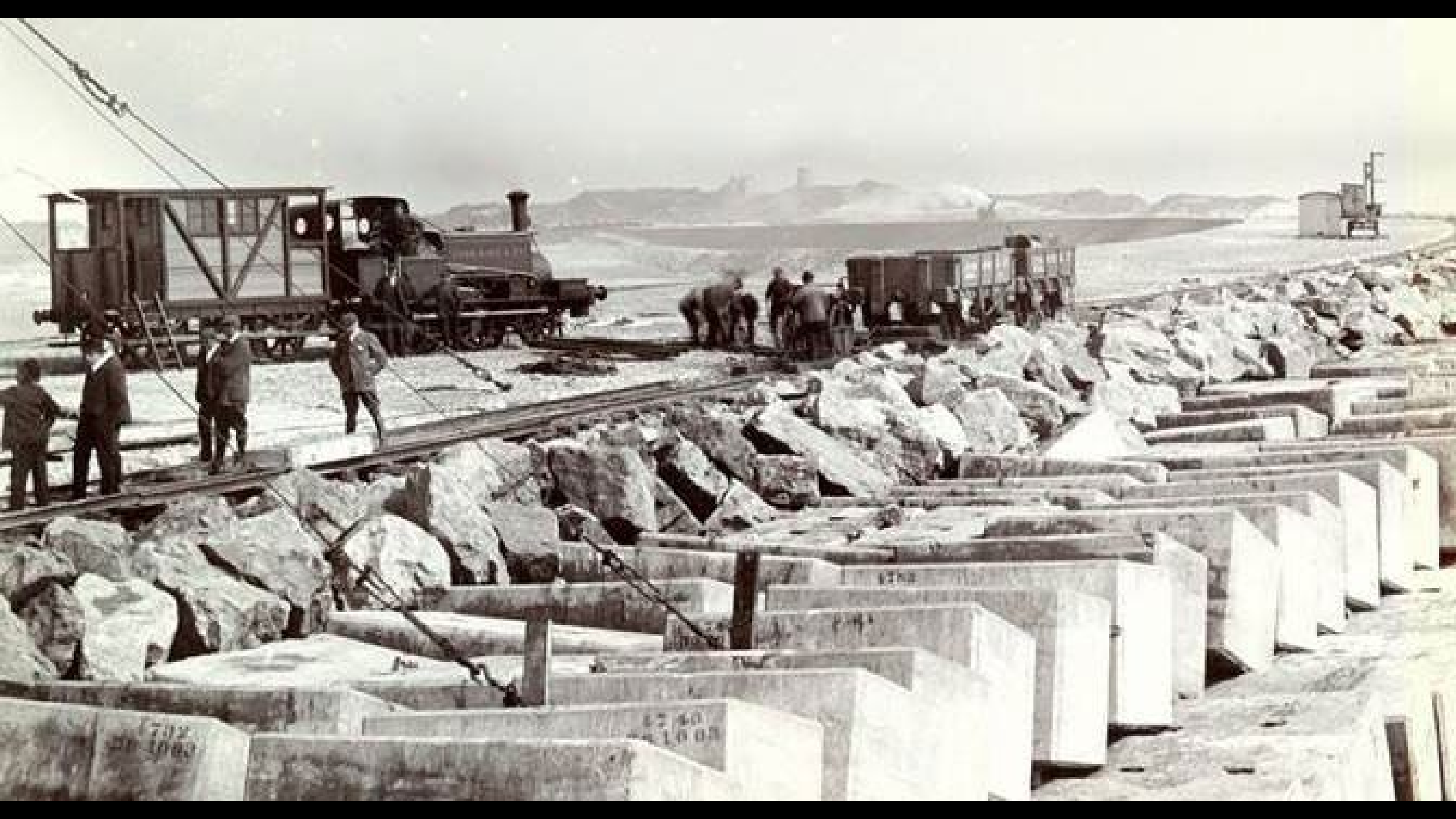
RAVENGLASS (from Gull Island).

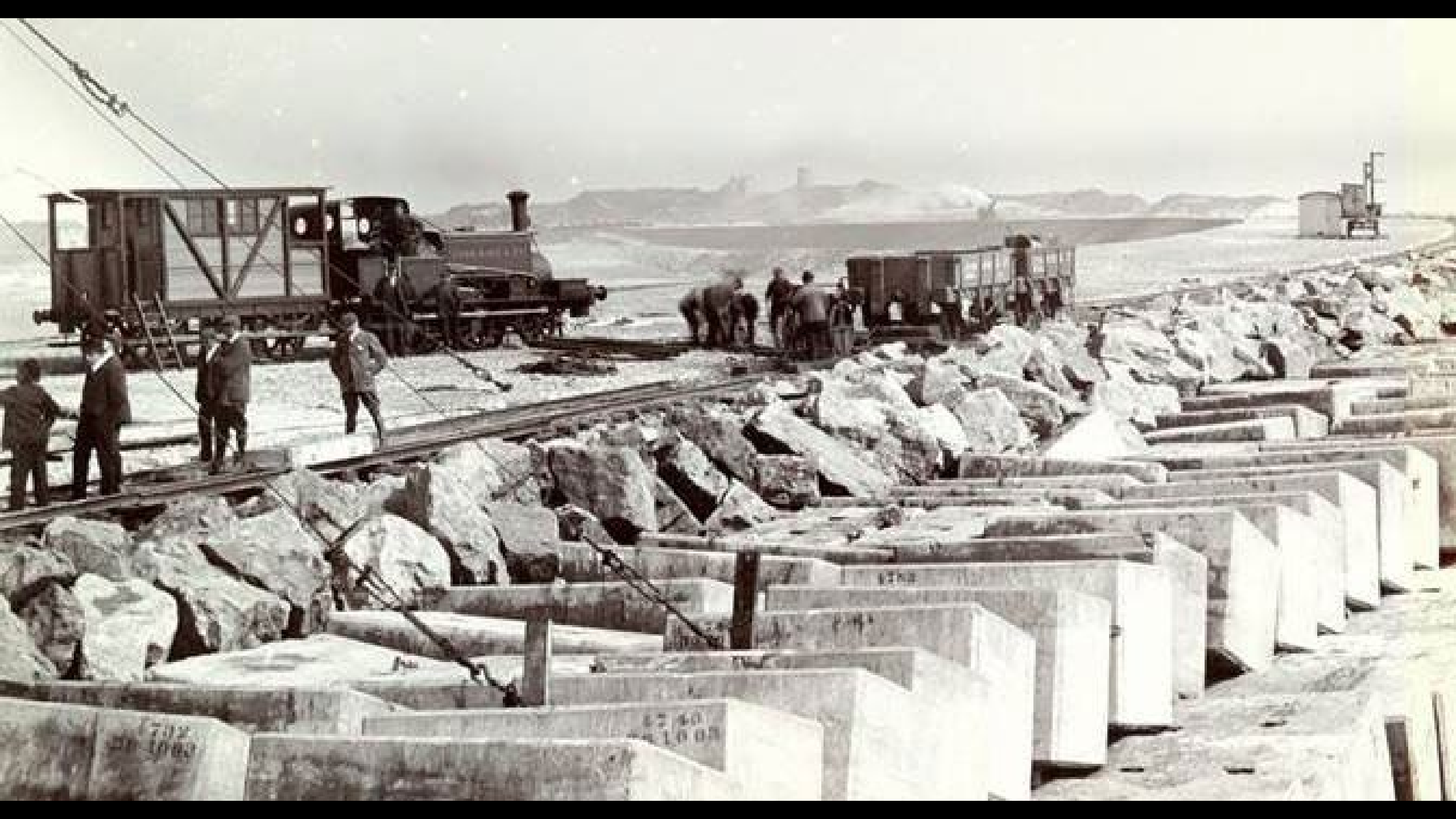
RAVENGLASS STATION.

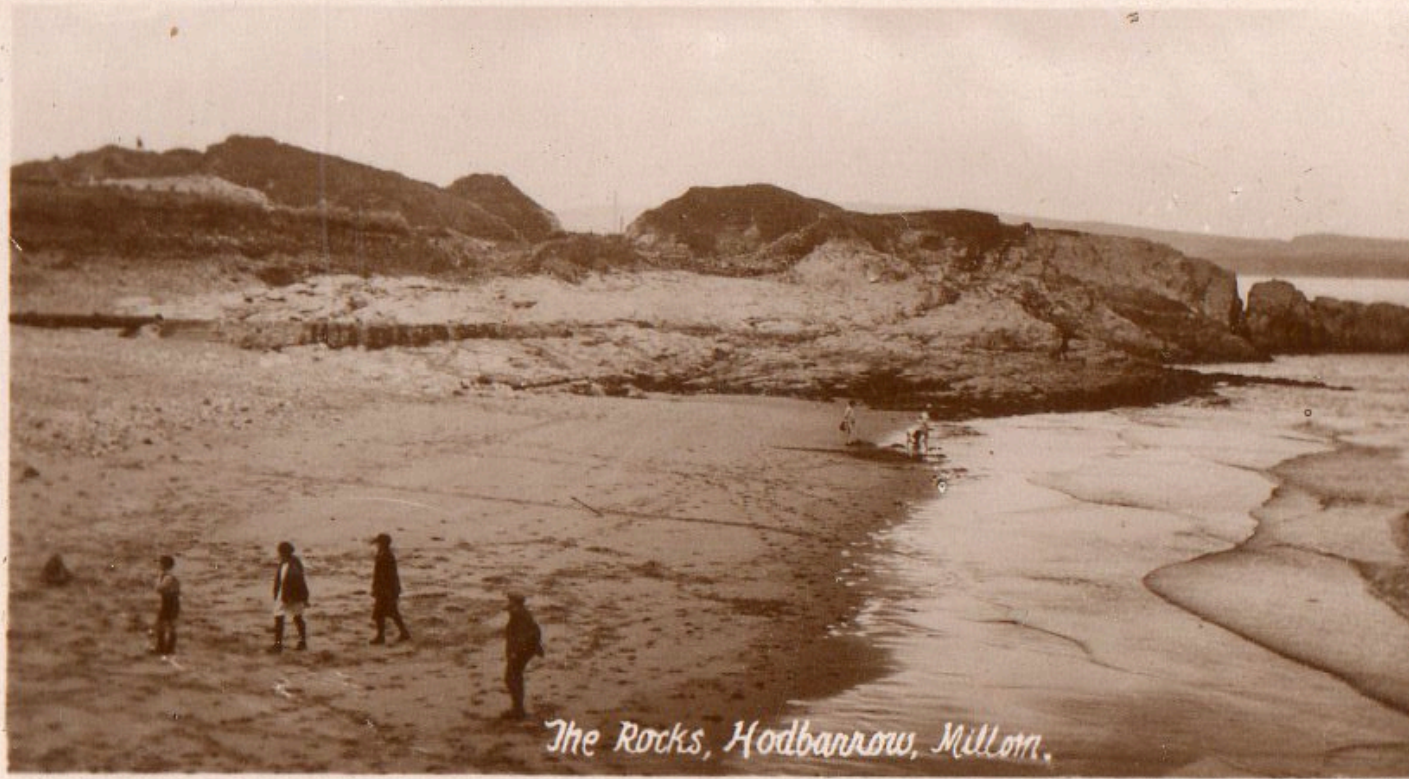
A. HEATON COOPER.





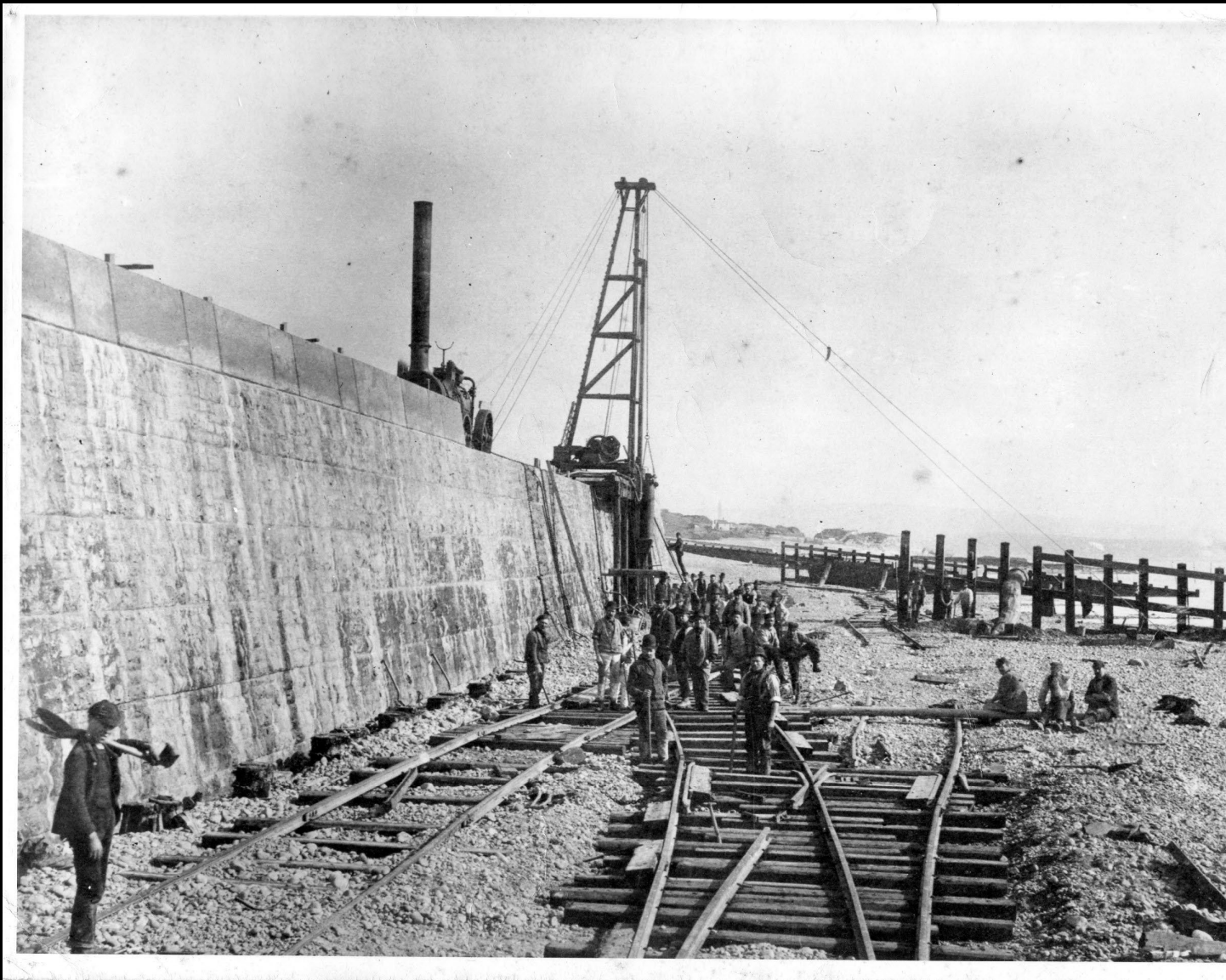


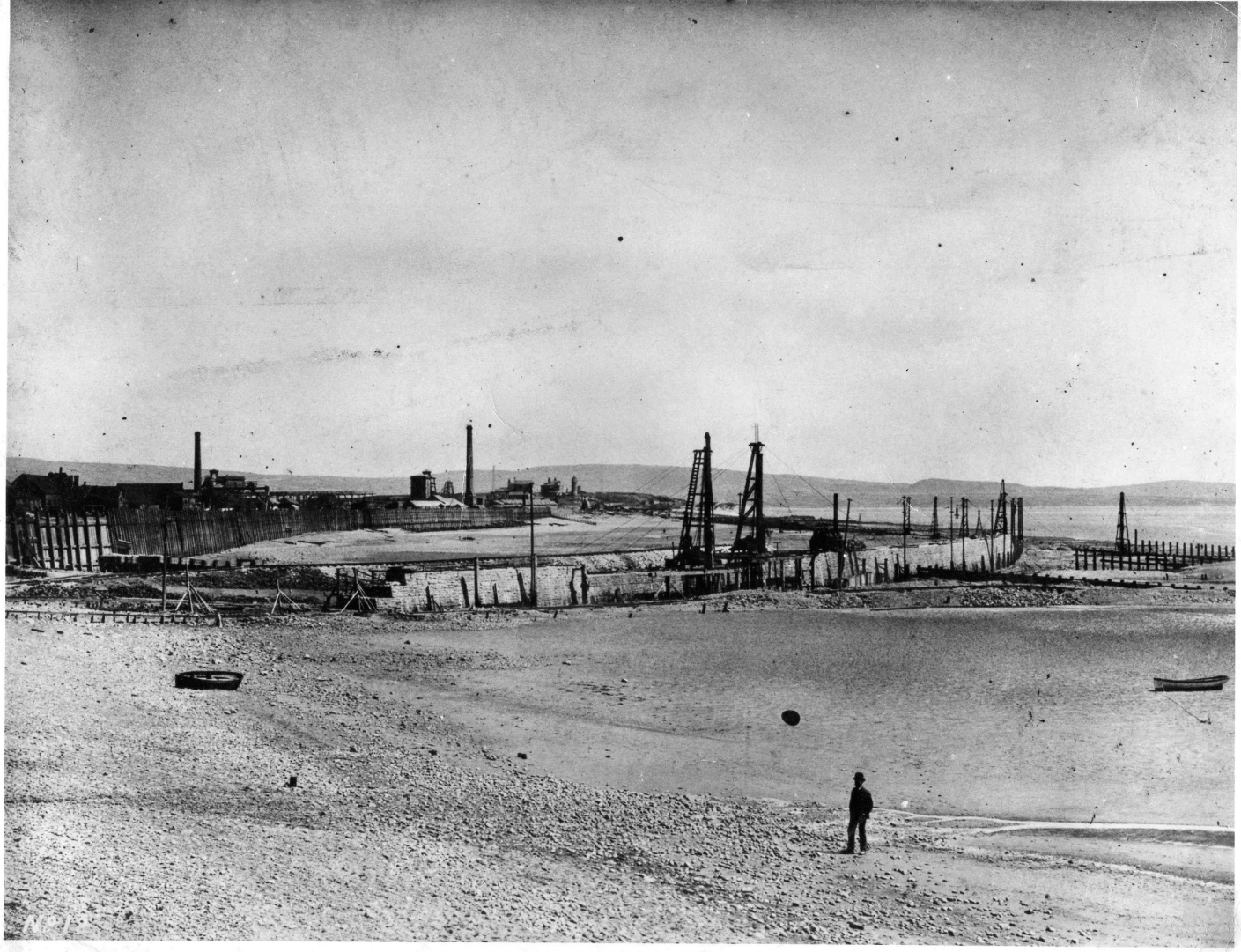




*The Rocks, Hodbannow, Millom.*























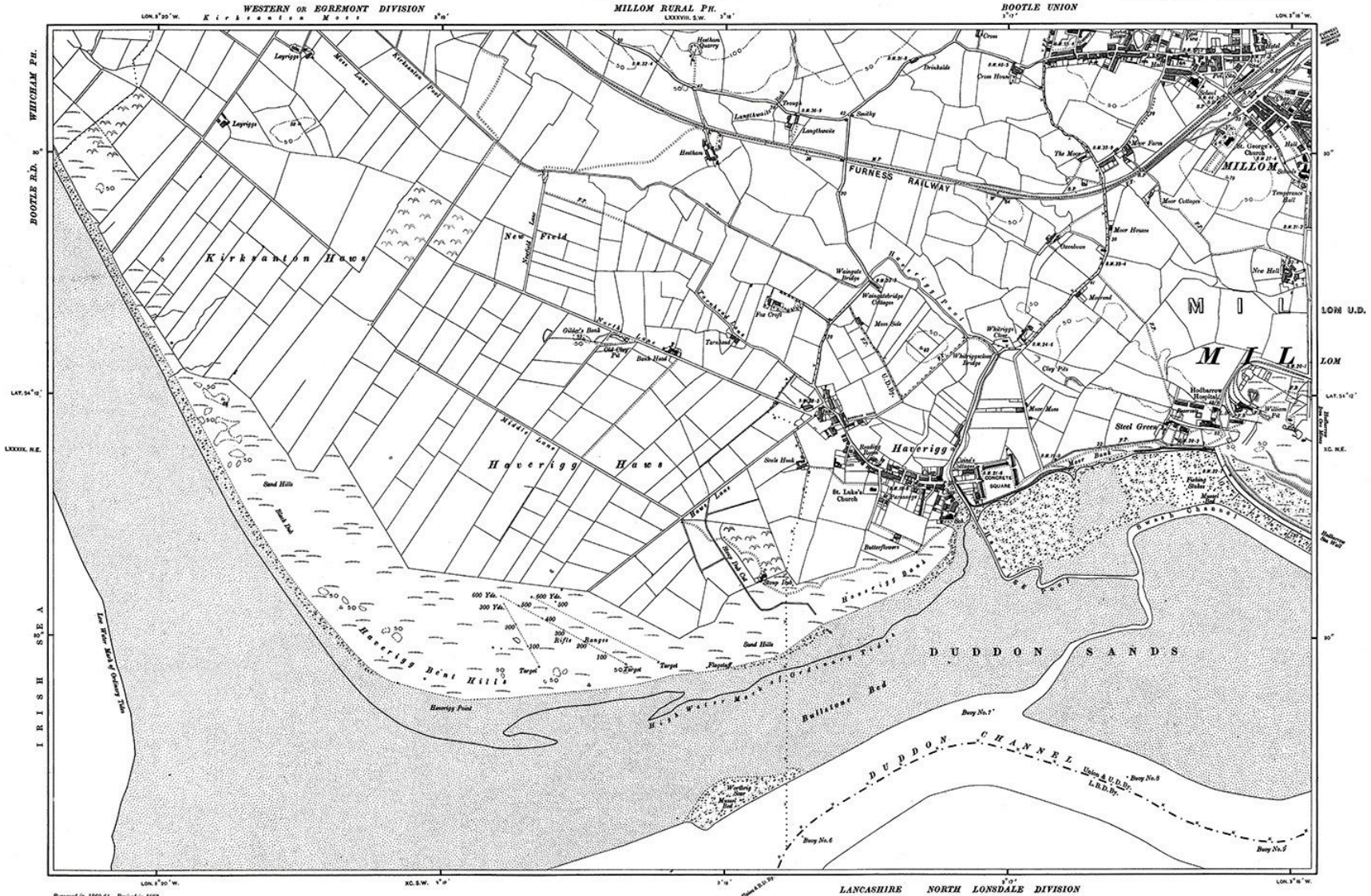
70252

HODBARROW No. 6, MILLOM

VALENTINES SERIES

*Main Street, Holborn Hill, Millom  
(from Station).*



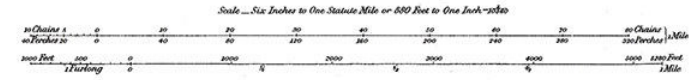


Surveyed in 1860-61. Revised in 1899.

**CHARACTERISTICS AND SYMBOLS.**

County Boundary ————  
 Parish Boundary ————  
 [Instrumental] ————  
 Contours ————  
 Antiquities, Site of ————  
 Arrow, showing direction of flow of water. ————  
 For other information, see Characteristic Sheet.

Price 1s.



*Hedincrographical from 2500 Plans and Published at the Ordnance Survey Office, Southampton.* N.B.—The representation on this map of a Road, Track, or Footpath, is no evidence of the existence of a right of way.

The Altitudes are given in Feet above the assumed Mean Level of the Sea at Liverpool, which is 0-100 of a Foot below the general Mean Level of the Sea.

Altitudes indicated thus (120) refer to Bench Marks on Buildings, Walls, &c. those marked thus (120) preceded or followed by the height to surface level.

SHEET — 30  
 N.E.  
 S.W. S.E.

